

Butterfly Passion Project

with Mrs. Derksen



Week 2
learning package

Week 1 Schedule: May 11-15

Work on the learning materials included in this package throughout the week at times that work best for your family

Monday May 11

- watch daily Facebook updates and complete observation log sheet
- learn about the anatomy of a butterfly

Tuesday May 12

- watch daily Facebook updates and complete observation log sheet
- butterflies vs. moths



Wednesday May 13

- watch daily Facebook updates and complete observation log sheet
- ZOOM meeting @ 1:00pm. Link will be on Facebook page

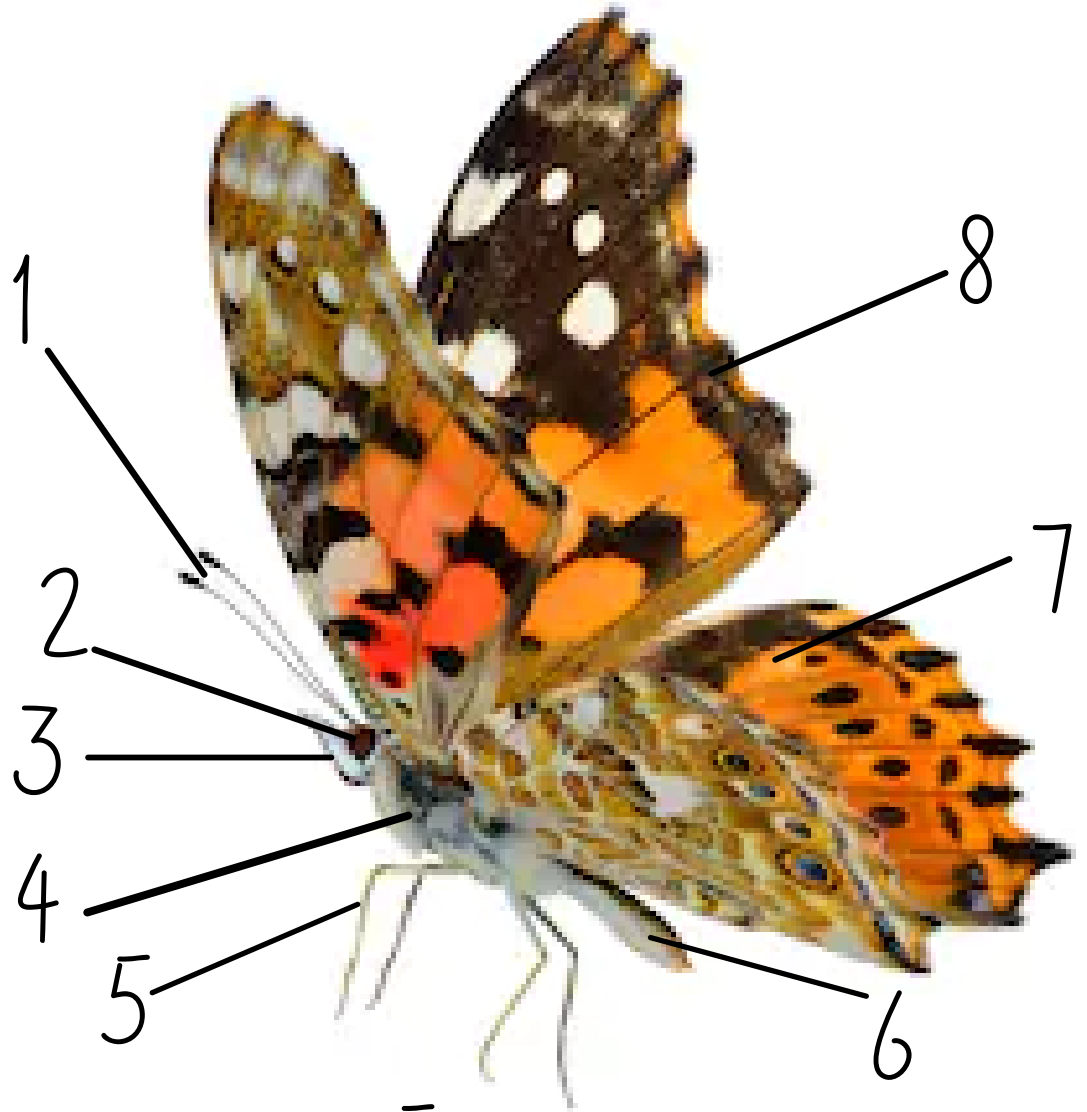
Thursday May 14

- watch daily Facebook updates and complete observation log sheet
- watch, learn and respond to the learning video posted on Facebook

Friday May 15

- watch daily Facebook updates and complete observation log sheet
- Follow along: directed drawing video with Mrs. Derksen, posted on Facebook

Anatomy of a Butterfly



1 antenna

5 legs

2 compound eye

6 abdomen

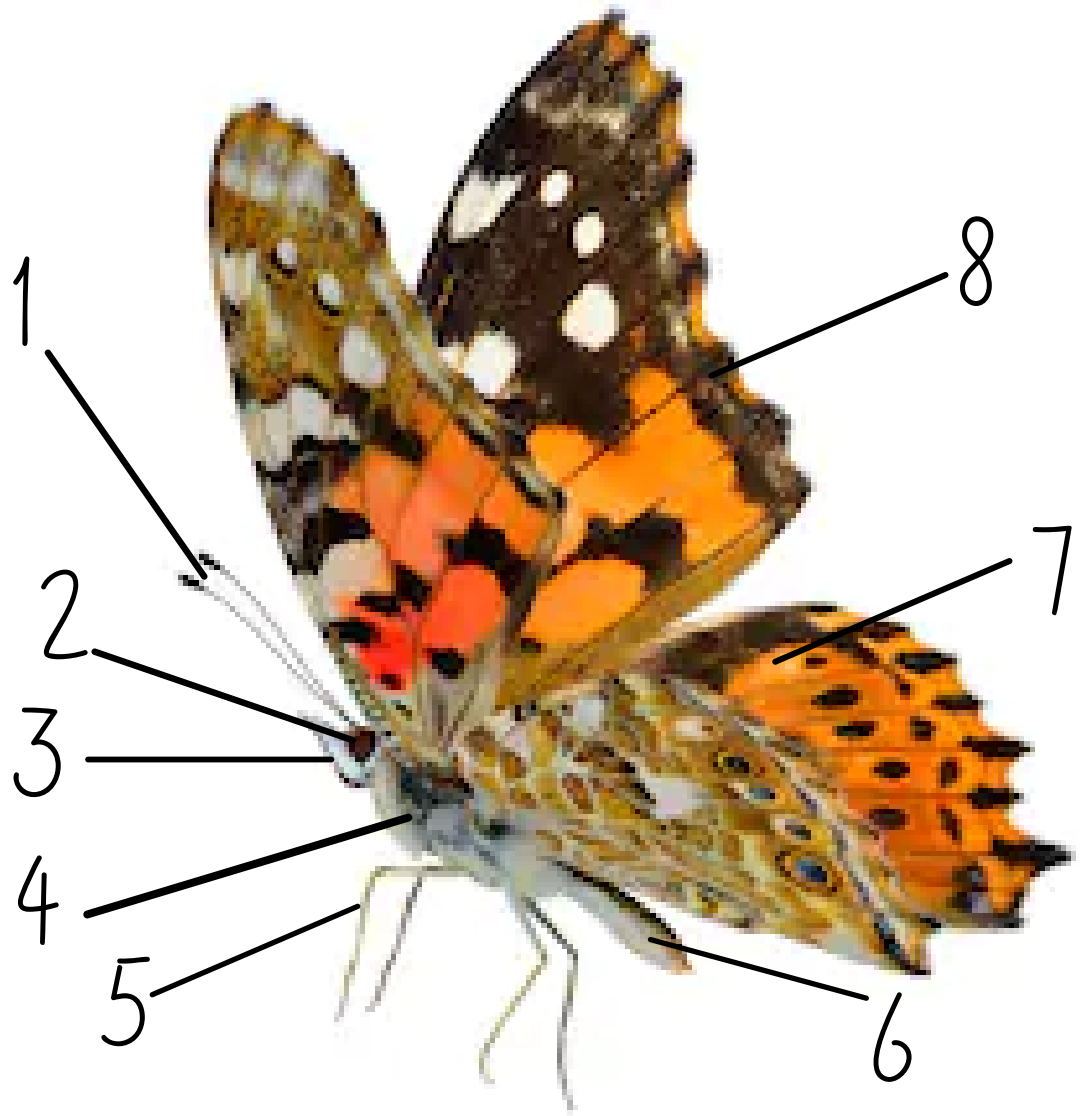
3 mouth/proboscis

7 hindwing

4 thorax

8 frontwing

Anatomy Fill in the Blank



Fill in the blanks to identify the parts of the butterfly

1 _____ 5 _____

2 _____ 6 _____

3 _____ 7 _____

4 _____ 8 _____

Butterflies vs Moths

Do you know the difference between butterflies and moths? Read the facts below, then use them on the next page to fill out the comparison chart.



butterfly

- brightly coloured
- has a thin body
- active during the day
- wings rest together upright
- straight, smooth antenna with bulbs on the end
- creates a chrysalis in the pupa stage



moth

- dull coloured
- has a thick body
- active during the night
- wings rest at their sides
- feathered, fuzzy antenna
- creates a cocoon in the pupa stage

both

- are insects with 6 legs
- begin life as an egg then hatch into a larvae or caterpillar
- have a head, thorax and abdomen

butterflies



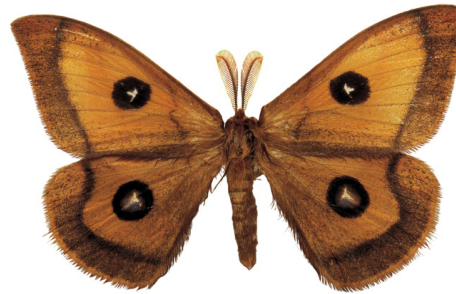
both

moths



Butterfly or Moth?

Now that you're an expert at telling the difference between butterflies and moths, put your skills to the test by identifying these images as either a butterfly or a moth.



Butterfly vs Moth



Wordsearch

YMQMZSQMFRONTWINGJBU
TOZIBEZSYZUHPBJPNKSH
TLVOPERSYIRQMUTELIGY
YREJPRNZHDFXJTJYFKJK
BEOF TVOMHPRKFTSEBGNW
AMKQYDRBKOOTXEAVALLI
OBLTYHTKOWWCLRLZXTLA
PDDMKTMBG SUVEFVVPCFP
NTHONVROMFCHGLYKQESO
CBBKMFKBTXTISYUEJLZU
CHYDREMTNHLHSDMCUWVA
OLRBMMNRLSESOQESNHLG
CVAYXRWVRQXUGRQEELYB
OVANSNEYBCLPYGAUKZIE
OCANBAUCHNXVMOTXBJNY
NUQOTPLMXHINDWINGSSD
RFAZRETIIVTLBQJCTROEJ
ZMQZTUNUSQRBPBXMZSCJ
KPGZDXRNJNEHOZRZUVTM
KXSYCTLZAXWQOFDYUZVY

chrysalis
hindwing
insect
eye

butterfly
antenna
moth

frontwing
abdomen
legs

proboscis
thorax
cocoon

design and colour me!

